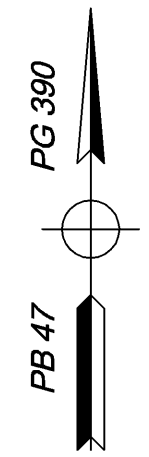
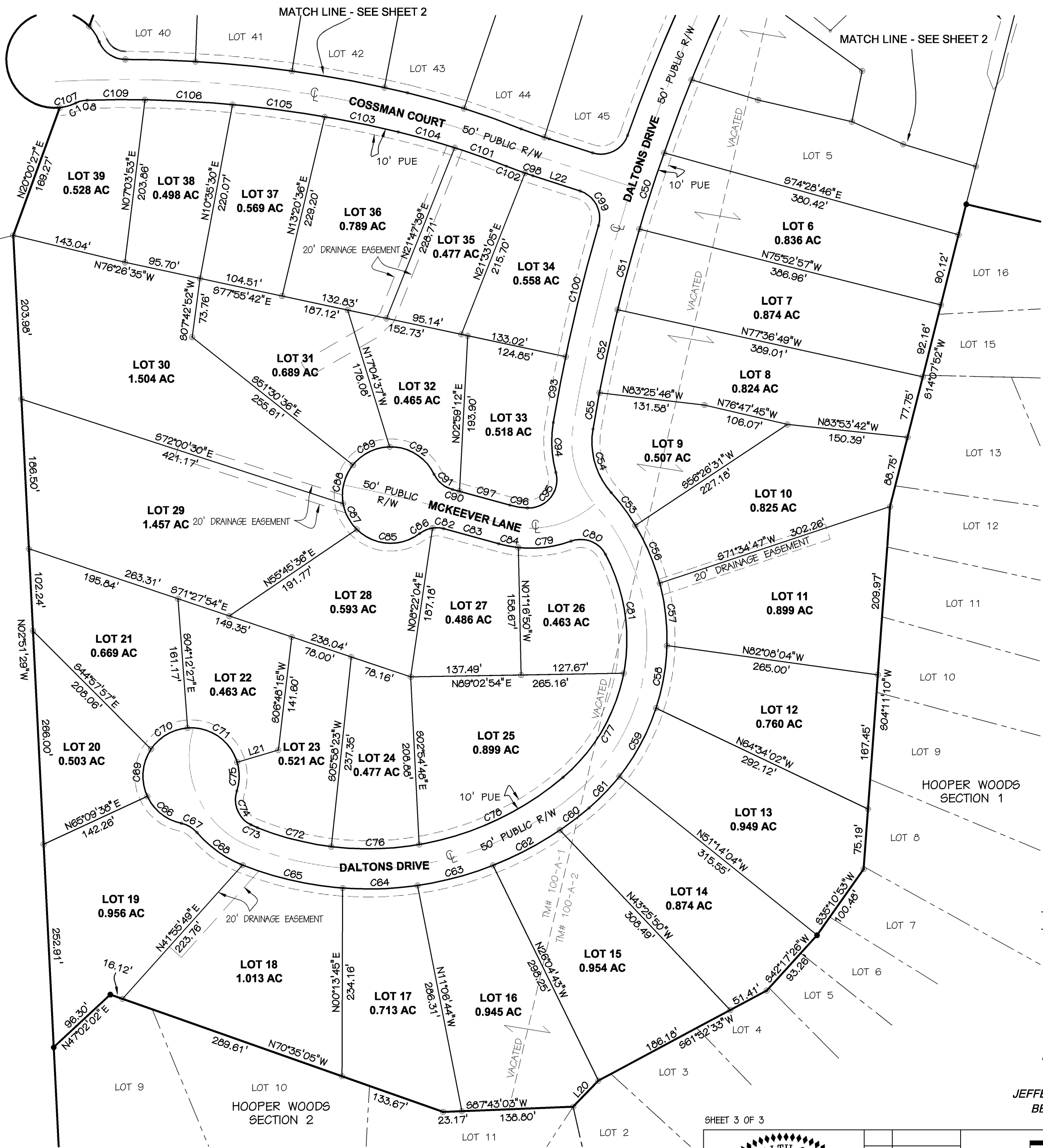


TM# 82-A-53
N/F
ADDISON LESLIE W & BETTY
DB 584/562
REF: INST# 060011592 (PB 47 PG 390)

TM# 99-A-28
N/F
S & R FARM LLC
INST# 030024202

| CURVE | LENGTH | RADIUS | BEARING | CHORD | DELTA |
|-------|---------|----------|-------------|---------|------------|
| C50 | 99.66' | 2085.00' | N17°57'35"E | 99.65' | 2°44'20" |
| C51 | 103.94' | 2085.00' | N15°09'44"E | 103.93' | 2°51'23" |
| C52 | 106.00' | 2085.00' | N12°16'39"E | 105.99' | 2°54'47" |
| C53 | 50.80' | 275.00' | N36°21'40"W | 50.73' | 10°35'03" |
| C54 | 84.92' | 95.00' | N16°02'44"W | 82.12' | 51°12'55" |
| C55 | 45.82' | 2085.00' | N10°11'30"E | 45.82' | 1°15'33" |
| C56 | 78.41' | 275.00' | N22°54'02"W | 78.14' | 16°20'12" |
| C57 | 78.41' | 275.00' | N06°33'50"W | 78.14' | 16°20'12" |
| C58 | 79.25' | 275.00' | N09°51'38"E | 78.98' | 16°30'45" |
| C59 | 96.95' | 275.00' | N28°13'00"E | 96.45' | 20°11'58" |
| C60 | 45.60' | 425.00' | N52°45'40"E | 45.58' | 6°08'51" |
| C61 | 54.58' | 275.00' | N44°00'06"E | 54.49' | 11°22'16" |
| C62 | 94.29' | 425.00' | N62°11'27"E | 94.10' | 12°42'41" |
| C63 | 97.51' | 425.00' | N75°07'11"E | 97.30' | 13°08'47" |
| C64 | 93.35' | 425.00' | N87°59'07"E | 93.16' | 12°35'06" |
| C65 | 128.27' | 425.00' | 87°04'33"E | 127.79' | 17°17'34" |
| C66 | 56.06' | 60.00' | 95°36'17"E | 54.04' | 53°31'49" |
| C67 | 23.09' | 35.00' | 85°28'19"E | 22.67' | 37°47'43" |
| C68 | 70.49' | 145.00' | 85°30'07"E | 69.80' | 27°51'18" |
| C69 | 61.55' | 60.00' | 90°43'59"W | 58.89' | 58°46'44" |
| C70 | 54.30' | 60.00' | 85°51'57"W | 52.47' | 51°51'12" |
| C71 | 81.21' | 60.00' | N55°25'55"W | 75.15' | 77°33'04" |
| C72 | 95.19' | 375.00' | N75°42'04"W | 94.93' | 14°32'36" |
| C73 | 9.01' | 95.00' | N65°42'46"W | 9.01' | 5°26'00" |
| C74 | 49.51' | 35.00' | N22°28'29"W | 45.48' | 81°02'33" |
| C75 | 36.34' | 60.00' | N00°41'42"E | 35.79' | 34°42'10" |
| C76 | 109.85' | 375.00' | 868°38'08"W | 109.46' | 16°47'01" |
| C77 | 152.69' | 225.00' | 830°14'47"W | 149.77' | 38°52'54" |
| C78 | 199.99' | 375.00' | 864°57'56"W | 197.63' | 30°33'23" |
| C79 | 66.79' | 145.00' | N83°01'51"E | 66.21' | 26°23'36" |
| C80 | 50.13' | 35.00' | 869°08'04"E | 45.95' | 82°03'46" |
| C81 | 152.79' | 225.00' | 808°38'55"E | 149.68' | 38°54'32" |
| C82 | 13.93' | 35.00' | 886°52'38"E | 13.63' | 22°47'48" |
| C83 | 71.01' | 2645.00' | 87°42'36"E | 71.01' | 1°32'18" |
| C84 | 24.88' | 145.00' | 878°51'24"E | 24.85' | 9°49'54" |
| C85 | 85.55' | 60.00' | 886°16'09"E | 78.49' | 81°41'39" |
| C86 | 17.82' | 35.00' | N67°18'15"E | 17.43' | 28°50'26" |
| C87 | 36.75' | 60.00' | 927°52'31"E | 36.18' | 35°05'38" |
| C88 | 51.12' | 60.00' | 914°04'51"W | 49.59' | 48°49'06" |
| C89 | 52.87' | 60.00' | 863°43'53"W | 51.17' | 50°28'58" |
| C90 | 9.16' | 2695.00' | N75°25'02"W | 9.16' | 0°11'41" |
| C91 | 30.58' | 35.00' | N50°29'12"W | 29.61' | 50°03'22" |
| C92 | 68.66' | 60.00' | N58°14'34"W | 64.98' | 65°34'08" |
| C93 | 83.34' | 2135.00' | 910°40'49"W | 83.34' | 2°14'12" |
| C94 | 62.82' | 145.00' | 902°50'58"E | 62.33' | 24°49'24" |
| C95 | 65.90' | 35.00' | 838°40'43"W | 56.59' | 107°52'47" |
| C96 | 22.29' | 95.00' | N80°39'40"W | 22.23' | 13°26'26" |
| C97 | 64.87' | 2695.00' | N74°37'49"W | 64.87' | 1°22'45" |
| C98 | 10.51' | 525.00' | 971°32'00"E | 10.51' | 1°08'51" |
| C99 | 54.01' | 35.00' | 927°53'57"E | 48.81' | 88°24'56" |
| C100 | 168.05' | 2135.00' | 914°03'13"W | 168.01' | 4°30'36" |
| C101 | 68.22' | 975.00' | 970°16'01"E | 68.20' | 4°00'32" |
| C102 | 24.71' | 525.00' | 969°36'40"E | 24.71' | 2°41'49" |
| C103 | 93.41' | 1470.00' | 978°23'21"E | 93.39' | 3°38'26" |
| C104 | 73.13' | 975.00' | 974°25'12"E | 73.11' | 4°17'51" |
| C105 | 115.67' | 1470.00' | 982°27'49"E | 115.65' | 4°30'31" |
| C106 | 109.15' | 1470.00' | 986°50'43"E | 109.13' | 4°15'16" |
| C107 | 20.76' | 60.00' | N73°54'32"E | 20.66' | 19°49'42" |
| C108 | 14.80' | 35.00' | N76°06'21"E | 14.69' | 24°13'19" |
| C109 | 72.11' | 1470.00' | N89°37'20"E | 72.10' | 2°48'38" |

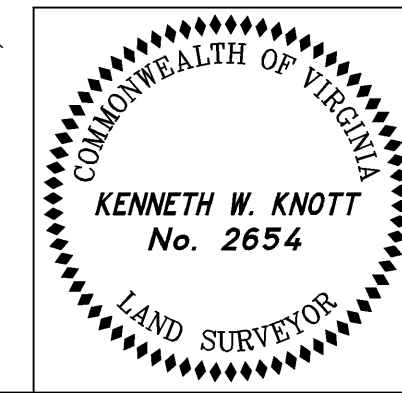
| LINE | LENGTH | BEARING |
|------|--------|-------------|
| L20 | 45.12' | 843°53'02"W |
| L21 | 53.36' | 873°20'37"W |
| L22 | 61.83' | 872°06'25"E |



LEGEND
 ○ — IRON PIN SET
 ● — IRON PIN FOUND

PLAT SHOWING
HOOPER WOODS SECTION 3
 JEFFERSON MAGISTERIAL DISTRICT
 BEDFORD COUNTY, VIRGINIA

SHEET 3 OF 3



| | |
|-------|-----------------|
| REV: | 09/29/06 JD |
| DWN: | JMD |
| DATE: | 08/10/06 |
| DWG: | V-6P-04109-9EC3 |
| JOB: | 04109 |

GRAPHIC SCALE 1"=100'
 100 0 100
PERKINS & ORRISON
 ENGINEERS ▲ PLANNERS ▲ SURVEYORS
 PO BOX 1567 17 W. NELSON STREET LEXINGTON, VIRGINIA, 24450
 PHONE: 540-464-9001 FAX: 540-464-5009
 E-Mail: pno@perkins-orrison.com